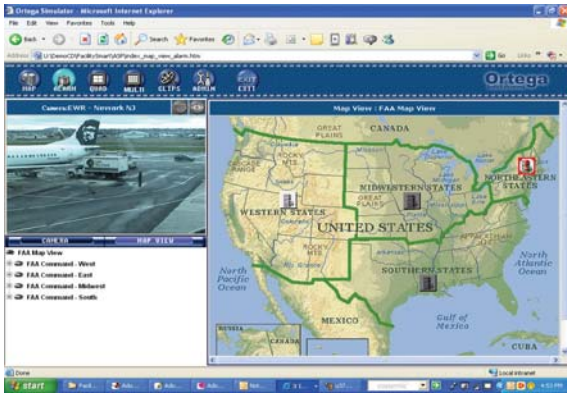


# VideoSm@rt



- Simplifies operating of multiple video components – dramatically reduces operator training time
- Provides a seamless interface with disparate video systems—no coding or special wiring required
- Provides an integrated video recording and streaming component (NVR) for a complete video solution
- Virtual switching feature eliminates the requirement for the matrix switcher and simplifies the video encoder/decoder operations
- Web-based application – no client software to install
- Allows multiple authorized users to control all subsystems from any browser, anywhere, any time, expanding the usage and visibility
- Uses standard network infrastructure – IT friendly

## VideoSm@rt FUNCTIONS DESCRIPTION

Ortega InfoSystems VideoSm@rt system is a product line that provides complete video integration, based on the success of Ortega's flagship product, FacilitySmart, a web-based platform that seamlessly integrates various security systems. The new VideoSm@rt Integration Platform provides an easy migration path for traditional CCTV applications to the new IP video solutions, such as IP cameras, video servers, video decoders and Network DVRs (NVRs or Hybrid DVRs). All end-user operations are provided through an Internet browser with rich, map-based Graphical User Interfaces. Through the NVR (network video recording) component, VideoSm@rt can provide a complete video solution with a substantially lower overall cost.

VideoSm@rt is designed and based upon the "virtual security operations center" concept. In the event of a security breach, VideoSm@rt transmits alarm notifications as directed via the Web, e-mail, phone, or pager. Responding security professionals may log in remotely to VideoSm@rt via any network-connected Internet Explorer browser to receive first-hand alarm information, allowing accurate assessment of and reaction to the situation. In-house security professionals may also share video with local emergency and enforcement agencies in the same manner, anytime, anywhere.

## ARCHITECTURE

The powerful combination of integration software and Web-browser based graphical user interface (GUI) makes VideoSm@rt a unique tool for connecting and managing disparate video subsystems. VideoSm@rt's open architecture and powerful integration routines require no software development by the customer because add-on modules quickly expand system capabilities.

VideoSm@rt helps businesses create unparalleled security solutions by increasing management efficiency, reducing operating costs, and simplifying asset protection.

## SYSTEM COMPONENTS

### Application Server

The application server is responsible for communicating the status of your entire security system or any grouping of individual subsystems you desire. Through a software device controller called SmartNode™, the application server monitors and controls all the devices in the network as directed by Operator's Application (client).

### Intuitive Design Engine™

Utilizing the Intuitive Design Engine, a full integration of disparate video subsystems can be completed by the systems integrator conveniently and quickly. As device icons representing various components (monitors, cameras, etc.) are selected and dragged onto a background facility map, the Intuitive Design Engine automatically generates the interface software in the background. Configuration of multiple devices is accomplished quickly using a new and powerful tool that dramatically reduces system configuration time.

### VideoSm@rt NVR™

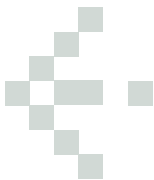
A unique IP video recording and streaming component provides a smooth migration path for systems with DVRs to new IP video devices while providing the same recording and streaming capability users could expect from the DVRs. With this integration, more users can share the same video sources without the streaming limitation on the traditional DVRs or IP cameras.

### SmartNode™

The SmartNode controller is an optional software module that monitors and controls third party video devices, while speeding up the execution of data between transmitted between VideoSm@rt and the subsystem. SmartNode application software can be installed on the VideoSm@rt Application Server, the subsystem's server or a separate PC depending on load, subsystem warranty and/or communication methodology.

### Operator's Application (Web Client)

The operator's application utilizes Microsoft Internet Explorer to provide the operator with full monitoring and control capabilities through VideoSm@rt's user-friendly GUI. Other than entry of operator comments, all selection, monitoring and control functions are requested through the point-and-click design of intuitive site maps, menus and device icons. Minimal training is required—in most cases operators are up and running within an hour.



## REQUIREMENTS

### Application Server

- 1GHz or faster CPU
- Minimum of 512MB RAM
- Minimum of 10GB hard drive with 200MB or more available hard drive space
- Windows 2000 Server (SP3 or later) or Windows XP Pro (SP1a or later) or Windows 2003 Server
- Microsoft IIS 5.0 or later
- 10/100 Base T network interface card or wireless
- Parallel or USB port for the software license key

### VideoSm@rt NVR

- 2 GHz or faster CPU
- Minimum of 512MB RAM
- Microsoft Windows 2000 (SP3 or later) or Windows XP Pro (SP1a or later) or Windows 2003 Server
- Microsoft IIS 5.0 or later
- 10/100 Base T network interface card or wireless

### Operator's PC

- 1GHz or faster CPU
- Minimum of 256MB RAM
- Minimum of 100MB available hard drive space
- Microsoft Windows 2000 (SP3 or later) or Windows XP Pro/Home (SP1a or later)
- 10/100 Base T network interface card or wireless
- Microsoft Internet Explorer 6.0 SP1 or later
- An SVGA monitor with a minimum resolution of 1024 x768

## SMARTNODE INTERFACES

### DVR Systems

- American Dynamics Intellex LT, DVMS, IP (Versions 2.2 – 3.2)
- Integral DVXi, DVXe, DS-express
- Verint DVR (Version 2.2 - 4.5) , SmartSight NVR (Version 2.5 - 3.1)
- Pelco DVX7000 , DVX8000 , Endura via ProtalX API

### IP Camera/Video Server

- Ortega IP Cameras, IPKIT-5100, IPKIT-6200 Speed Dome, IPKIT-2100R, IPKIT-2100S, SED-3100, SED-3110
- Axis 205, 2100, 2110, 2120, 2420, 2130, 2420 PTZ , 2420 IR-sensitive Static Network Camera
- SONY IP Cameras
- Panasonics IP Cameras

### IP Video Decoders

- Ortega IPKIT-3200

## ORDERING INFORMATION

Model Name	Description
VS-1000	For interface to third-party DVR systems with one camera license
VS-2000	For interface to third-party IP video systems with one camera license